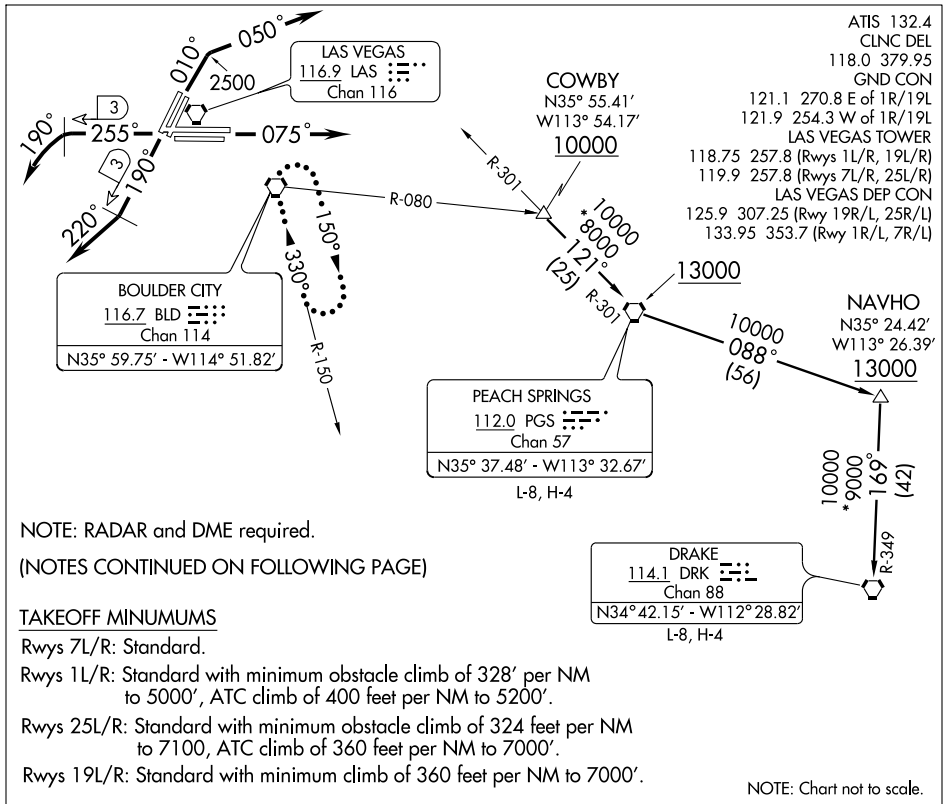


HOOVER THREE DEPARTURE



NOTE: RADAR and DME required.

(NOTES CONTINUED ON FOLLOWING PAGE)

TAKEOFF MINIMUMS

Rwys 7L/R: Standard.

Rwys 1L/R: Standard with minimum obstacle climb of 328' per NM to 5000', ATC climb of 400 feet per NM to 5200'.

Rwys 25L/R: Standard with minimum obstacle climb of 324 feet per NM to 7100, ATC climb of 360 feet per NM to 7000'.

Rwys 19L/R: Standard with minimum climb of 360 feet per NM to 7000'.

NOTE: Chart not to scale.

DEPARTURE ROUTE DESCRIPTION

TAKE-OFF RUNWAYS 1L/R: Climb via heading 010° to 2500, then climbing right turn via heading 050°, thence

TAKE-OFF RUNWAYS 7L/R: Climb via heading 075°, thence

TAKE-OFF RUNWAYS 19L/R: Climb via heading 190° until LAS VORTAC 3 DME, then right turn via heading 220°, thence

TAKE-OFF RUNWAYS 25L/R: Climb via heading 255° until LAS VORTAC 3 DME, then left turn via heading 190°, thence

.... via radar vector to transition or assigned route, maintain 7000, expect clearance to filed altitude two minutes after departure.

LOST COMMUNICATIONS: If no contact with ATC upon reaching 7000', proceed direct BLD VORTAC then climb in BLD VORTAC holding pattern to appropriate MEA for route of flight.

DRAKE TRANSITION (HOOVR3.DRK): From over COWBY INT via PGS R-301 to PGS VORTAC then PGS R-088 and DRK R-349 to DRK VORTAC.

PEACH SPRINGS TRANSITION (HOOVR3.PGS): From over COWBY INT via PGS R-301 to PGS VORTAC.