

LAS VEGAS THREE DEPARTURE

ATIS 132.4
 CLNC DEL
 118.0 379.95
 GND CON
 121.1 270.8 E of 1R/19L
 121.9 254.3 W of 1R/19L
 LAS VEGAS DEP CON
 125.9 307.25 (Rwy 19R/L, 25R/L)
 133.95 353.7 (Rwy 1R/L, 7R/L)

MILFORD
 112.1 MLF
 Chan 58
 N38°21.62' - W113°00.79'

DOVE CREEK
 114.6 DVC
 Chan 93
 N37°48.53' - W108°55.88'
 L-9, H-3

BRYCE CANYON
 112.8 BCE
 Chan 75
 N37°41.35' - W112°18.23'

LAS VEGAS
 116.9 LAS
 Chan 116

TRALR
 N36°11.62'
 W114°14.68'
 10000

FL260

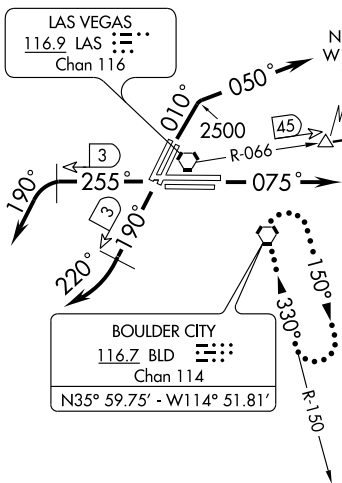
FL270
 053°
 (131)

PAGE
 117.6 PGA
 Chan 123
 N36°55.86' - W111°26.85'

FL260
 054°
 (94)

NICLE
 N36°18.73'
 W113°13.48'
 FL240

BOULDER CITY
 116.7 BLD
 Chan 114
 N35°59.75' - W114°51.81'



NOTE: RADAR and DME required.

(NOTES CONTINUED ON FOLLOWING PAGE)

TAKE-OFF MINIMUMS

- Rwys 7L/R: Standard.
- Rwys 1L/R: Standard with minimum obstacle climb of 328' per NM to 5000', ATC climb of 400' per NM to 5200'.
- Rwys 25L/R: Standard with minimum obstacle climb of 324' per NM to 7100', ATC climb of 360' per NM to 7000'.
- Rwys 19L/R: Standard with minimum climb of 360' per NM to 7000'.

NOTE: Chart not to scale.

DEPARTURE ROUTE DESCRIPTION

TAKE-OFF RUNWAYS 1L/R: Climb via heading 010° to 2500, then climbing right turn via heading 050°, thence

TAKE-OFF RUNWAYS 7L/R: Climb via heading 075°, thence

TAKE-OFF RUNWAYS 19L/R: Climb via heading 190° until LAS VORTAC 3 DME, then right turn via heading 220°, thence

TAKE-OFF RUNWAYS 25L/R: Climb via heading 255° until LAS VORTAC 3 DME, then left turn via heading 190°, thence

... via radar vector to transition or assigned route, maintain 7000', expect clearance to filed altitude two minutes after departure.

LOST COMMUNICATIONS: If no contact with ATC upon reaching 7000', proceed direct BLD VORTAC then climb in BLD VORTAC holding pattern to appropriate MEA for route of flight.

DOVE CREEK TRANSITION (LAS3.DVC): From over TRALR INT via LAS R-066 to NICLE INT, then via PGA R-234 to PGA VOR/DME, then via PGA R-053 and DVC R-233 to DVC VORTAC.