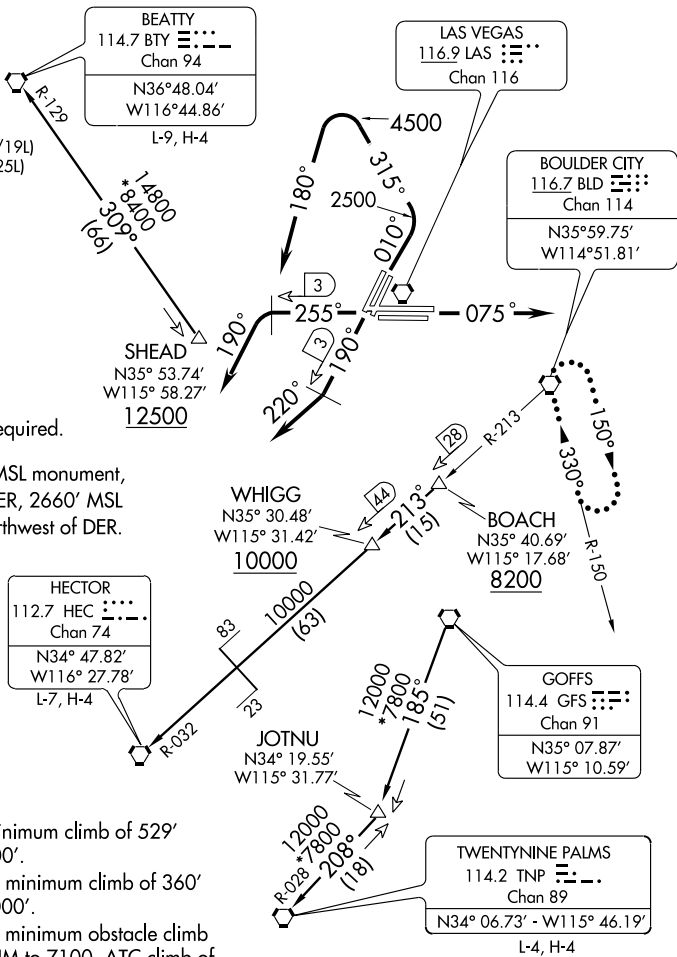


MCCARRAN THREE DEPARTURE

ATIS 132.4
 CLNC DEL
 118.0 379.95
 GND CON
 121.1 270.8 E of 1R/19L
 121.9 254.3 W of 1R/19L
 LAS VEGAS TOWER
 118.75 257.8 (Rwy 1L/19R, 1R/19L)
 119.9 257.8 (Rwy 7L/25R, 7R/25L)
 LAS VEGAS DEP CON
 125.9 307.25



NOTE: RADAR and DME required.

NOTE: Rwys 1L/R 3189' MSL monument, 2.7 NM north of DER, 2660' MSL building, 1 NM northwest of DER.

TAKE-OFF MINIMUMS

- Rwys 1L/R: 1100-3 with minimum climb of 529' per NM to 7000'.
- Rwys 19L/R: Standard with minimum climb of 360' per NM to 7000'.
- Rwys 25L/R: Standard with minimum obstacle climb of 324' per NM to 7100, ATC climb of 360' per NM to 7000.
- Rwys 7L/R: Standard with minimum ATC climb of 440' per NM to 7000'.

TAKE-OFF OBSTACLE NOTES

- RWY 1L: Pole 450' from DER, 283' left of centerline, 38' AGL/2118' MSL.
Obstacle light on wind sock 248' from DER, 224' right of centerline, 50' AGL/2104' MSL.
Pole 1029' from DER, 715' left of centerline, 85' AGL/2124' MSL.
Tree 1536' from DER, 502' left of centerline, 100' AGL/2132' MSL.
- RWY 1R: Sign 1331' from DER, 448' right of centerline, 60' AGL/2120' MSL
Building 599' from DER, 541' right of centerline, 70' AGL/2096' MSL

(NOTES CONTINUED ON FOLLOWING PAGE)

(NARRATIVE ON FOLLOWING PAGE)

NOTE: Chart not to scale.

SW-4, 14 FEB 2008 to 13 MAR 2008

SW-4, 14 FEB 2008 to 13 MAR 2008

MCCARRAN THREE DEPARTURE