

# RNAV (GPS) RWY 19L

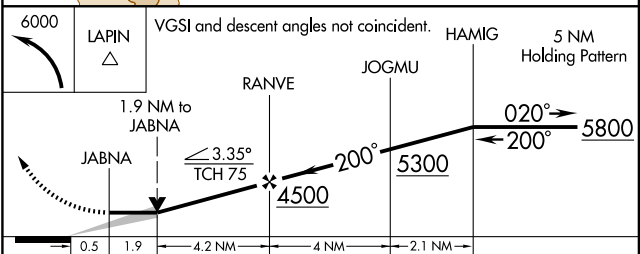
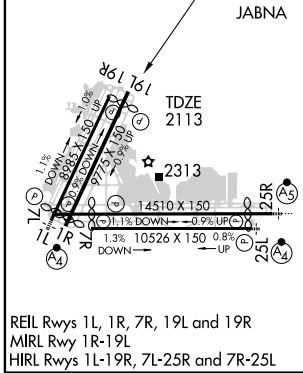
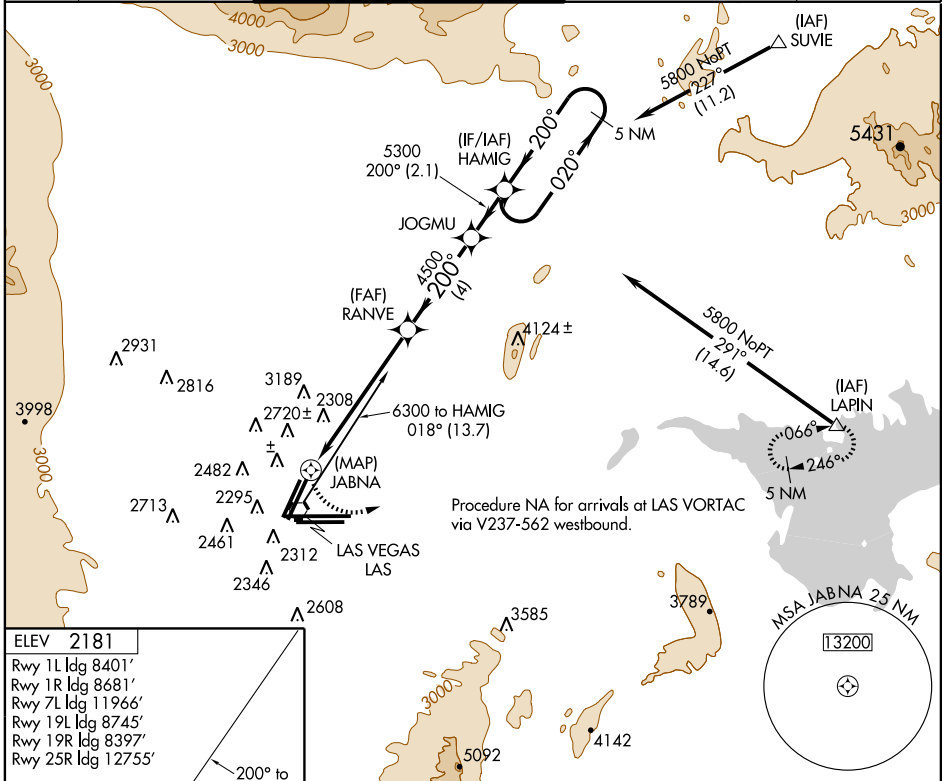
LAS VEGAS/McCARRAN INTL (LAS)

APP CRS	Rwy Idg	<b>8745</b>
<b>200°</b>	TDZE	<b>2113</b>
	Apt Elev	<b>2181</b>

**⚠** If local altimeter setting not received, use North Las Vegas altimeter setting and increase all MDAs 40 feet.  
 DME/DME RNP: 0.3 NA.  
 VDP NA when using North Las Vegas altimeter setting.

**⚠** MISSED APPROACH: Climbing left turn to 6000 direct LAPIN and hold.

ATIS	LAS VEGAS APP CON	LAS VEGAS TOWER	GND CON	CLNC DEL
<b>132.4</b>	<b>125.025 379.15</b>	<b>118.75 257.8</b> (Rwy 1L/19R, 1R/19L) <b>119.9 257.8</b> (Rwy 7L/25R, 7R/25L)	<b>121.1 270.8</b> E of 1R/19L <b>121.9 254.3</b> W of 1R/19L	<b>118.0 379.95</b>



CATEGORY	A	B	C	D
LNNAV MDA	2920-1 807 (800-1)	2920-1¼ 807 (800-1¼)	2920-2¼ 807 (800-2¼)	2920-2½ 807 (800-2½)
CIRCLING	3020-1 839 (900-1)	3020-1¼ 839 (900-1¼)	3080-2¾ 899 (900-2¾)	3080-3 899 (900-3)

SW-4, 15 MAR 2007 to 12 APR 2007

SW-4, 15 MAR 2007 to 12 APR 2007