

# RNAV (GPS) RWY 19R

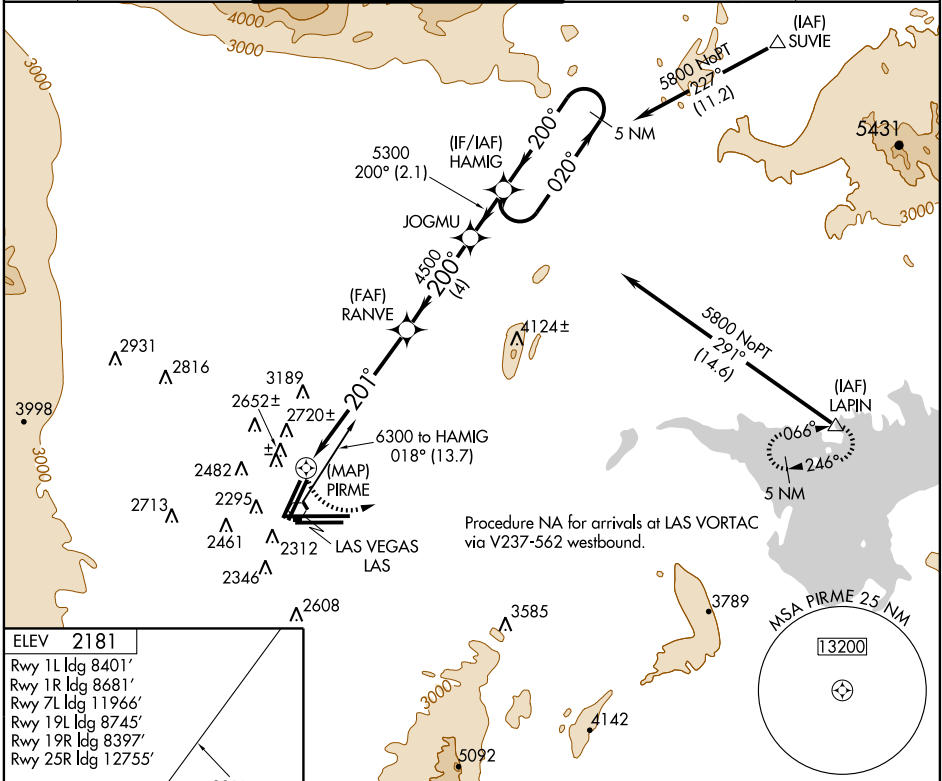
LAS VEGAS/McCARRAN INTL (LAS)

APP CRS <b>201°</b>	Rwy Idg <b>8397</b>
	TDZE <b>2117</b>
	Apt Elev <b>2181</b>

**⚠** If local altimeter setting not received, use North Las Vegas altimeter setting and increase all MDAs 40 feet.  
DME/DME RNP-0.3 NA.  
Visibility reduction by helicopters NA.

**MISSED APPROACH:** Climbing left turn to 6000 direct LAPIN and hold.

ATIS <b>132.4</b>	LAS VEGAS APP CON <b>125.025 379.15</b>	LAS VEGAS TOWER <b>118.75 257.8</b> (Rwy 1L/19R, 1R/19L) <b>119.9 257.8</b> (Rwy 7L/25R, 7R/25L)	GND CON <b>121.1 270.8</b> E of 1R/19L <b>121.9 254.3</b> W of 1R/19L	CLNC DEL <b>118.0 379.95</b>
----------------------	--	--	---	---------------------------------



SW-4, 15 MAR 2007 to 12 APR 2007

SW-4, 15 MAR 2007 to 12 APR 2007

ELEV 2181
Rwy 1L Idg 8401'
Rwy 1R Idg 8681'
Rwy 7L Idg 11966'
Rwy 19L Idg 8745'
Rwy 19R Idg 8397'
Rwy 25R Idg 12755'

201° to PIRME

TDZE 2117

1.1% DOWN 8885' X 1.0% UP 8975'

1.3% DOWN 10526' X 1.5% UP 10626'

14510 X 150

REIL Rwy 1L, 1R, 7R, 19L and 19R  
MIRL Rwy 1R-19L  
HIRL Rwy 1L-19R, 7L-25R and 7R-25L

6000	LAPIN	VGSJ and descent angles not coincident.	HAMIG	5 NM Holding Pattern
0.5	6.1 NM	4 NM	2.1 NM	
CATEGORY	A	B	C	D
LNNAV MDA	2980-1 863 (800-1)	2980-1¼ 863 (800-1¼)	2980-2½ 863 (800-2½)	2980-2¾ 863 (800-2¾)
CIRCLING	3020-1 839 (900-1)	3020-1¼ 839 (900-1¼)	3080-2¾ 899 (900-2¾)	3080-3 899 (900-3)