

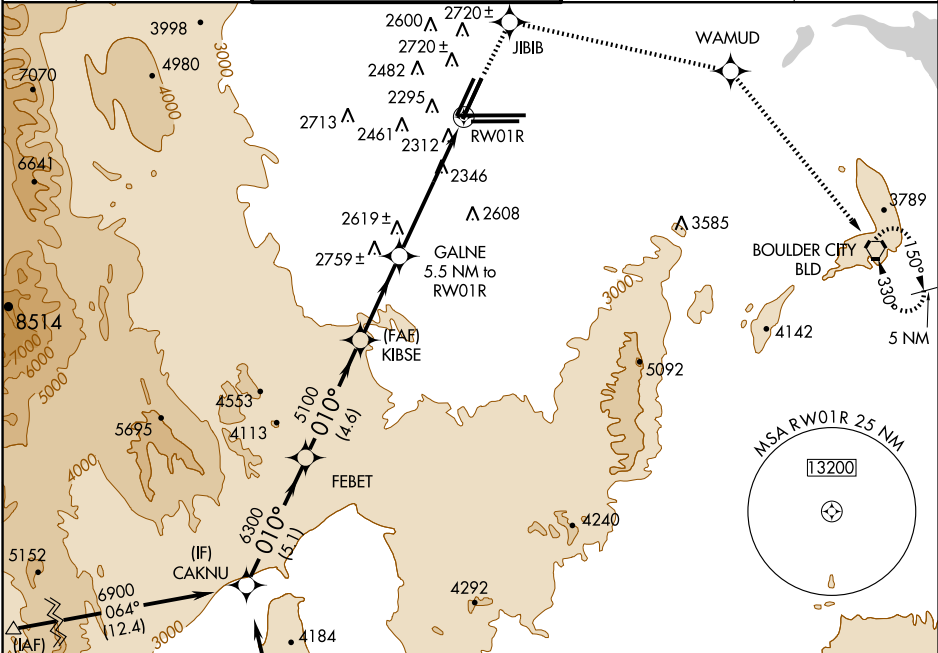
RNAV (GPS) RWY 1R

LAS VEGAS/McCARRAN INTL (LAS)

WAAS CH 42800 W01A	APP CRS 010°	Rwy ldg 8681 TDZE 2170 Apt Elev 2181
--	------------------------	---

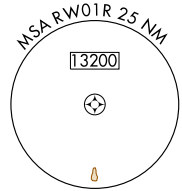
<p>▽ DME/DME RNP-0.3 NA.</p>	<p>MISSED APPROACH: Climb to 6000 direct JIBIB and via 089° track to WAMUD and via 126° track to BLD VORTAC and hold.</p>
-------------------------------------	---

<p>ATIS 132.4</p>	<p>LAS VEGAS APP CON 125.025 379.15</p>	<p>LAS VEGAS TOWER 118.75 257.8 (Rwy 1L/19R, 1R/19L) 119.9 257.8 (Rwy 7L/25R, 7R/25L)</p>	<p>GND CON 121.1 270.8 E of 1R/19L 121.9 254.3 W of 1R/19L</p>	<p>CLNC DEL 118.0 379.95</p>
------------------------------	--	---	--	---

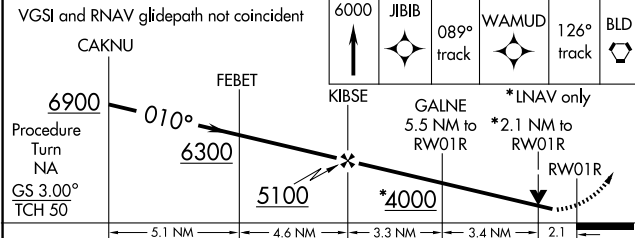


SW-4, 14 FEB 2008 to 13 MAR 2008

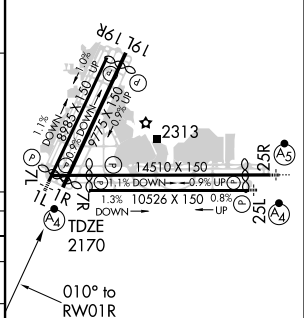
SW-4, 14 FEB 2008 to 13 MAR 2008



<p>VGSI and RNAV glidepath not coincident</p>	<p>6000 JIBIB</p>	<p>089° track</p>	<p>WAMUD</p>	<p>126° track</p>	<p>BLD</p>
---	-------------------	-------------------	--------------	-------------------	------------



ELEV 2181	Rwy 1L ldg 8401'
	Rwy 1R ldg 8681'
	Rwy 7L ldg 11966'
	Rwy 19L ldg 8745'
	Rwy 19R ldg 8397'
	Rwy 25R ldg 12755'



CATEGORY	A		B		C		D	
LPV DA	2693-1¼ 523 (600-1¼)							
LNAV/VNAV DA	NA							
LNAV MDA	2920-1 750 (800-1)	2920-1¼ 750 (800-1¼)	2920-2¼ 750 (800-2¼)	2920-2½ 750 (800-2½)				
CIRCLING	3020-1¼	839 (900-1¼)	3020-2½	839 (900-2½)	3020-2¾			

REIL Rws 1L, 1R, 7R, 19L and 19R
MRL Rwy 1R-19L
HIRL Rws 1L-19R, 7L-25R and 7R-25L