

FUZZY SEVEN ARRIVAL

ST-662 (FAA)

LAS VEGAS, NEVADA

LAS VEGAS APP CON
125.025 379.15
LAS VEGAS TOWER
118.75 257.8 (Rwy 1L/19R, 1R/19L)
119.9 257.8 (Rwy 7L/25R, 7R/25L)
NORTH LAS VEGAS TOWER*
125.7 360.75
LAS VEGAS ATIS
132.4
NORTH LAS VEGAS ATIS
118.05

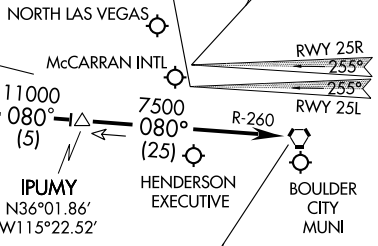
BEATTY
114.7 BTY
Chan 94
N36°48.04'-W116°44.86'
L-9, H-4

FUZZY
N36°12.03' - W115°54.02'
TURBOJET VERTICAL NAVIGATION
PLANNING INFORMATION
Expect clearance to cross at
16,000' at 250K.

MYCAL
N36°27.61'
W116°15.86'
FL210

LOCALIZER 111.75
I-RLE

LOCALIZER 110.3
I-LAS
Chan 40



BLD R-269
11000
080° (5)
IPUMY
N36°01.86'
W115°22.52'

BOULDER CITY
116.7 BLD
Chan 114
N35°59.75'-W114°51.82'

NOTE: RADAR REQUIRED.
NOTE: DME REQUIRED.
NOTE: Chart not to scale.

BEATTY TRANSITION (BTY.FUZZY7): From over BTY VORTAC via BTY R-115 to FUZZY INT. Thence . . .
. . . From over FUZZY via heading 100° to intercept BLD R-260 to BLD VORTAC.

LANDING McCARRAN INTL RWYS 1L/R, 7L/R, and 19L/R: Expect vectors for visual approach prior to BLD VORTAC.

LANDING McCARRAN INTL RWYS 25L/R: Expect ILS approach.

LANDING NORTH LAS VEGAS, HENDERSON EXECUTIVE, and BOULDER CITY MUNI :
After IPUMY, expect radar vectors to airport.

SW-4, 25 OCT 2007 to 22 NOV 2007

SW-4, 25 OCT 2007 to 22 NOV 2007

FUZZY SEVEN ARRIVAL

LAS VEGAS, NEVADA