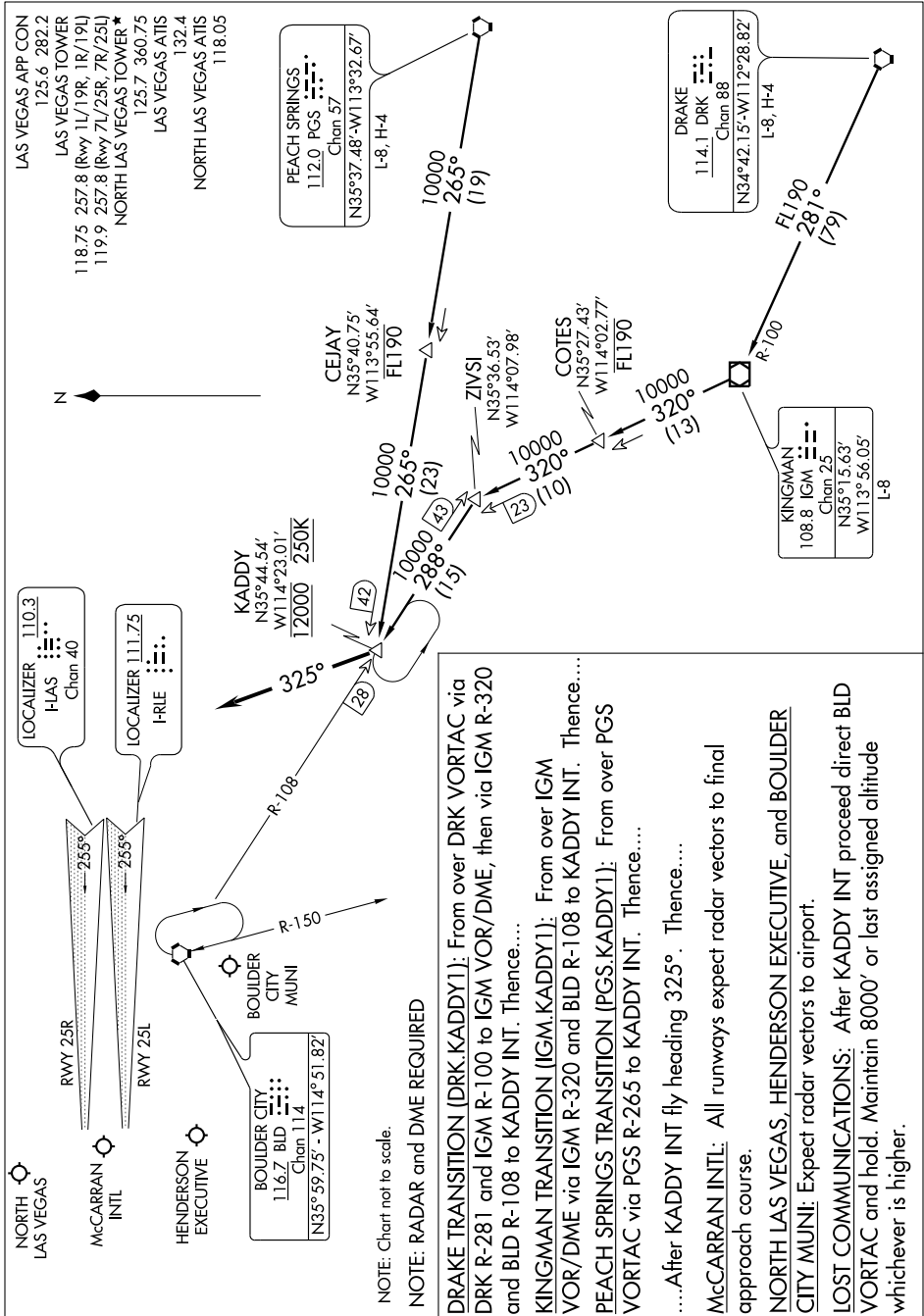


# KADDY ONE ARRIVAL

ST-662 (FAA)

LAS VEGAS, NEVADA

SW-4, 25 OCT 2007 to 22 NOV 2007



NOTE: Chart not to scale.

NOTE: RADAR and DME REQUIRED

**DRAKE TRANSITION (DRK.KADDY1):** From over DRK VORTAC via DRK R-281 and IGM R-100 to IGM VOR/DME, then via IGM R-320 and BLD R-108 to KADDY INT. Thence....

**KINGMAN TRANSITION (IGM.KADDY1):** From over IGM VOR/DME via IGM R-320 and BLD R-108 to KADDY INT. Thence....

**PEACH SPRINGS TRANSITION (PGS.KADDY1):** From over PGS VORTAC via PGS R-265 to KADDY INT. Thence....

....After KADDY INT fly heading 325°. Thence....

**McCARRAN INTL:** All runways expect radar vectors to final approach course.

**NORTH LAS VEGAS, HENDERSON EXECUTIVE, and BOULDER CITY MUNI:** Expect radar vectors to airport.

**LOST COMMUNICATIONS:** After KADDY INT proceed direct BLD VORTAC and hold. Maintain 8000' or last assigned altitude whichever is higher.

SW-4, 25 OCT 2007 to 22 NOV 2007

# KADDY ONE ARRIVAL

LAS VEGAS, NEVADA