

LAS VEGAS, NEVADA

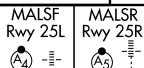
AL-662 (FAA)

VORTAC LAS <b>116.9</b> Chan <b>116</b>	APP CRS <b>262°</b>	Rwy 25L Idg <b>10526</b> TDZE <b>2069</b> Apt Elev <b>2181</b>	Rwy 25R Idg <b>12755</b> TDZE <b>2067</b> Apt Elev <b>2181</b>
-----------------------------------------------	------------------------	----------------------------------------------------------------------	----------------------------------------------------------------------

# VOR RWY 25L/R

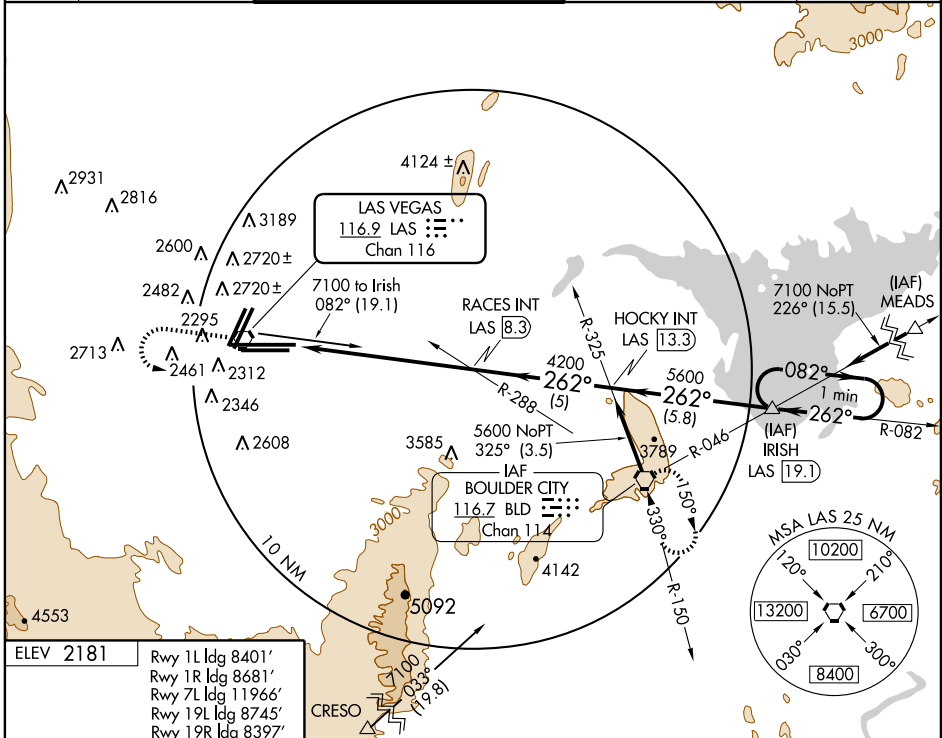
LAS VEGAS/McCARRAN INTL (LAS)

⚠ Inoperative table does not apply to MALSFR Rwy 25R.  
⚠ Inoperative table does not apply to MALSFR Rwy 25L Cats C and D.



MISSED APPROACH: Climb to 4000 then climbing left turn to 6000 direct BLD VORTAC and hold.

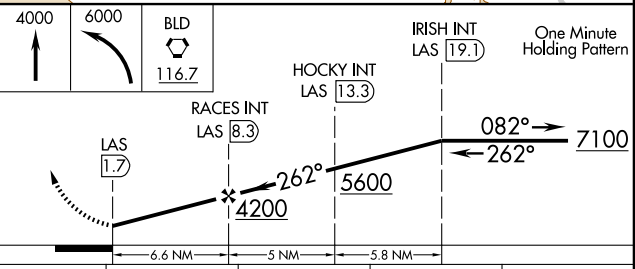
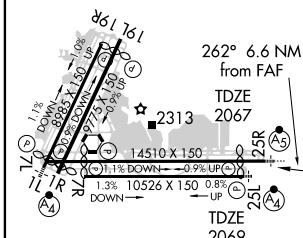
ATIS <b>132.4</b>	LAS VEGAS APP CON <b>125.025 379.15</b>	LAS VEGAS TOWER <b>118.75 257.8</b> (Rwy 1L/19R, 1R/19L) <b>119.9 257.8</b> (Rwy 7L/25R, 7R/25L)	GND CON <b>121.1 270.8</b> E of 1R/19L <b>121.9 254.3</b> W of 1R/19L	CLNC DEL <b>118.0 379.95</b>
----------------------	--------------------------------------------	--------------------------------------------------------------------------------------------------------	-----------------------------------------------------------------------------	---------------------------------



SW-4, 15 MAR 2007 to 12 APR 2007

SW-4, 15 MAR 2007 to 12 APR 2007

ELEV 2181	Rwy 1L Idg 8401'
	Rwy 1R Idg 8681'
	Rwy 7L Idg 11966'
	Rwy 19L Idg 8745'
	Rwy 19R Idg 8397'
	Rwy 25R Idg 12755'



REIL Rwys 1L, 1R, 7R, 19L and 19R  
MIRL Rwy 1R-19L  
HIRL Rwys 1L-19R, 7L-25R and 7R-25L

FAF to MAP 6.6 NM

Knots	60	90	120	150	180
Min:Sec	6:36	4:24	3:18	2:38	2:12

CATEGORY	A	B	C	D
S-25R	2560-1	493 (400-1)	2560-1½ 493 (400-1½)	2560-1½ 493 (400-1½)
S-25L	2560-¾	491 (400-¾)	2560-1½ 491 (400-1½)	2560-1½ 491 (400-1½)
CIRCLING	3020-1 839 (900-1)	3020-1½ 839 (900-1½)	3020-2½ 839 (900-2½)	3020-2¾ 839 (900-2¾)

LAS VEGAS, NEVADA  
Amdt 2B 07074

36°05'N-115°09'W

# LAS VEGAS/McCARRAN INTL (LAS) VOR RWY 25L/R